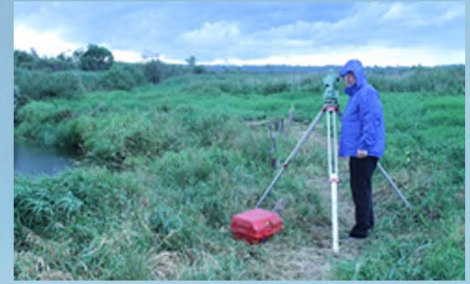


# Archaeological workshop and field school: Researches of Neolithic pile dwellings sites in Northwestern Russia: structure, chronology, and economy



## *The school is organized and carried out by:*

- The State Hermitage Museum (Russia)
- MAE Trajectoires. De la sédentarisation à l'État. UMR 8215, Université de Paris 1-CNRS (France)
- University of Lodz (Poland)
- St. Petersburg State University, Department of cartography and geoinformatic (Russia)

**Responsible for organization:** Andrey Mazurkevich, Yolaine Maigrot, Piotr Kittel, and Ekaterina Dolbunova

**Venue:** Russia, Smolensky region, Velizhsky district.

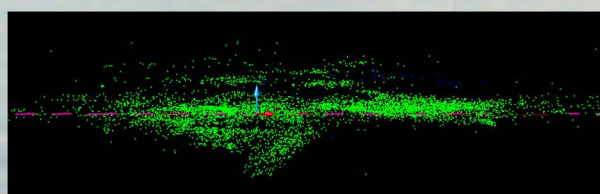
**Terms:** from 15 July to 16 August 2016 (the first term: 15 July- 1 August; the second term: 1 August - 16 August).

The field school will take place in archaeological microregions near the Serteya River and the Sennitsa and Usviaty lakes. Participants will gain insight into the paleogeography and archaeology of the area. In the course of archaeological field school excavations of peat bog and underwater part of the site Serteya II (3rd mill BC) will be conducted. During preceding years of underwater excavations the remains of several pile dwellings were uncovered. Interesting materials were found, that help us to describe the life of ancient inhabitants of this settlement. More detailed information can be found on <https://hermitage.academia.edu/AndreyMazurkevich/Papers?s=analytics#add> <http://neenawa.com/expeditions>

**Research tasks for 2016 field season:** continuation of excavations, determining chronological positions of different parts of the site and constructions, achieving new data about activities and materials world of different dwellings. Gathering new data about peculiarities of pile-dwellings' construction and investigation into sources of formation of pile-dwellings construction traditions in this region (Western Dvina basin).

## **Activities:**

- topographical works- together with St.Petersburg State University, department of cartography and geoinformatic
- practice into geological researches and paleogeographical works - together with University Lodz, P. Kittel
- arranging place for excavations
- continuation of cultural layer excavation in peat-bog
- underwater excavation (for those who have diving license)
- archaeological material treatment
- field conservation and artefacts restoration
- primary treatment of materials (artefacts study, spatial analysis etc.)

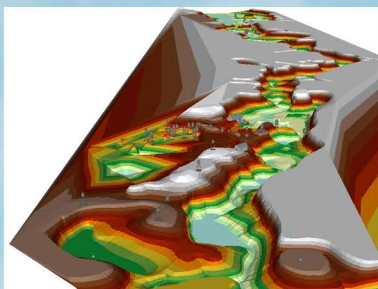




### ***Lectures and excursions:***

- Paleogeography and geology of Lovat-Dvina basin and Serteysky microregion (excursion with P. Kittel)
- Neolithic archaeology of North-Western Russia
- The earliest pottery in the communities of hunter-gatherers of Eastern Europe
- Archaeology in The State Hermitage museum
- Conservation of organic artefacts, pottery
- Excursions on the sites of Serteysky microregion, Sennitsa and Usviaty

***Lectures in the framework of archaeological workshop:*** by specialists in Scandinavian archaeology (the list of papers under preparation).



***Conditions:*** participants live in tents in the camp organized by the expedition in the forest. The nearest city is 40 km away. There is a small river in the camp. The travel expenses must be covered by participants themselves. Tents and meals during field school will be provided by the expedition.

If you want to participate in this field school, please, contact us via [a-mazurkevich@mail.ru](mailto:a-mazurkevich@mail.ru), with a brief CV attached.

